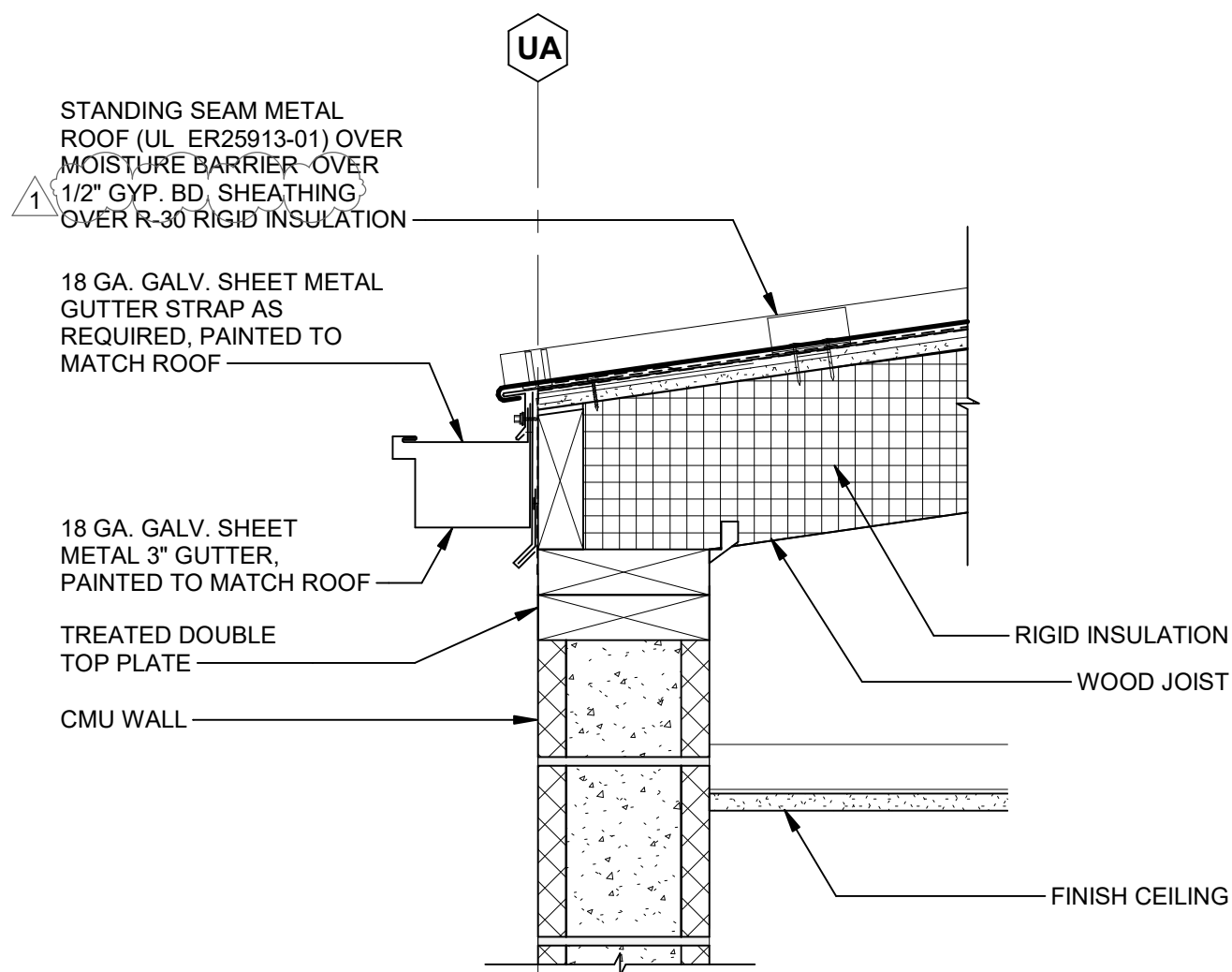
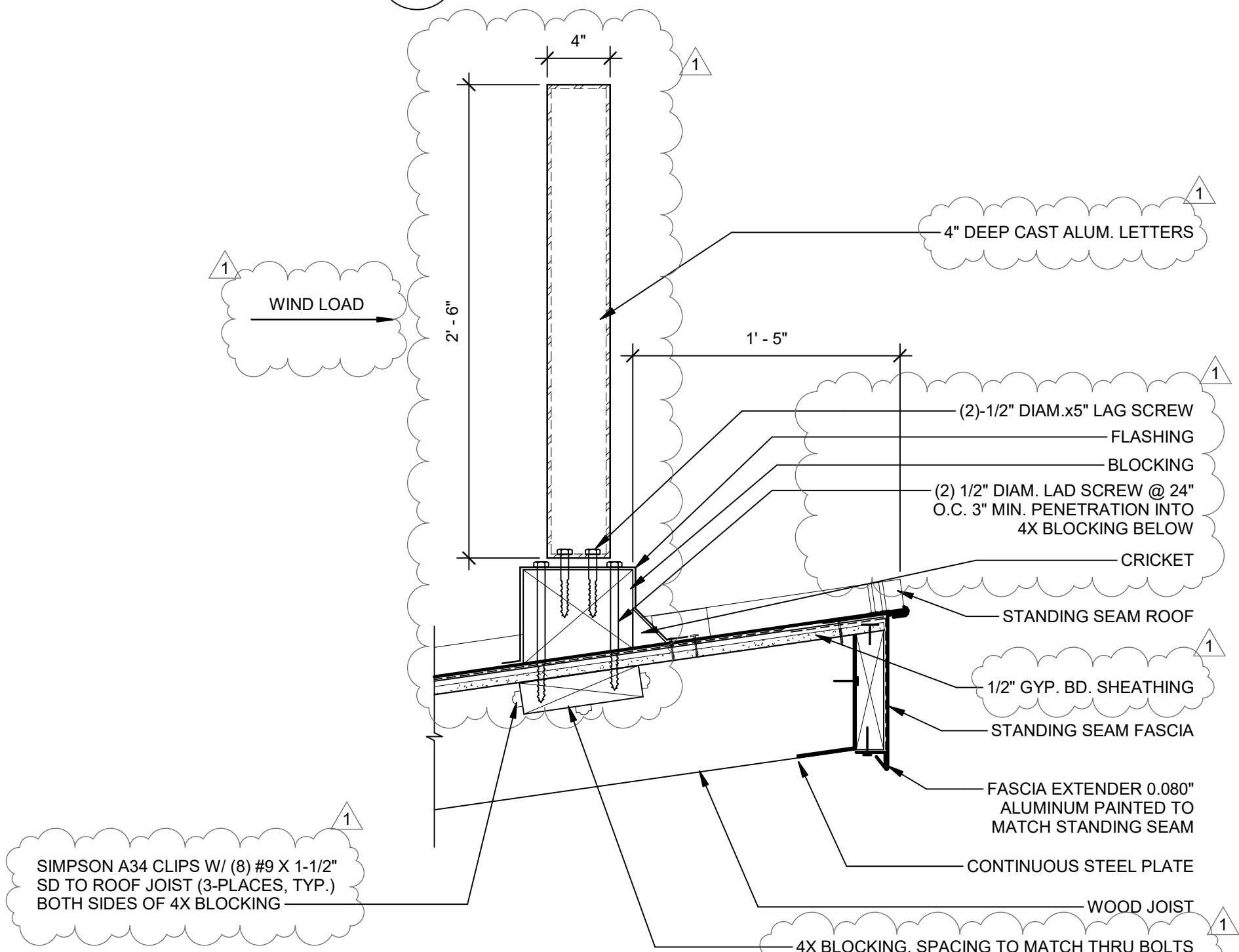


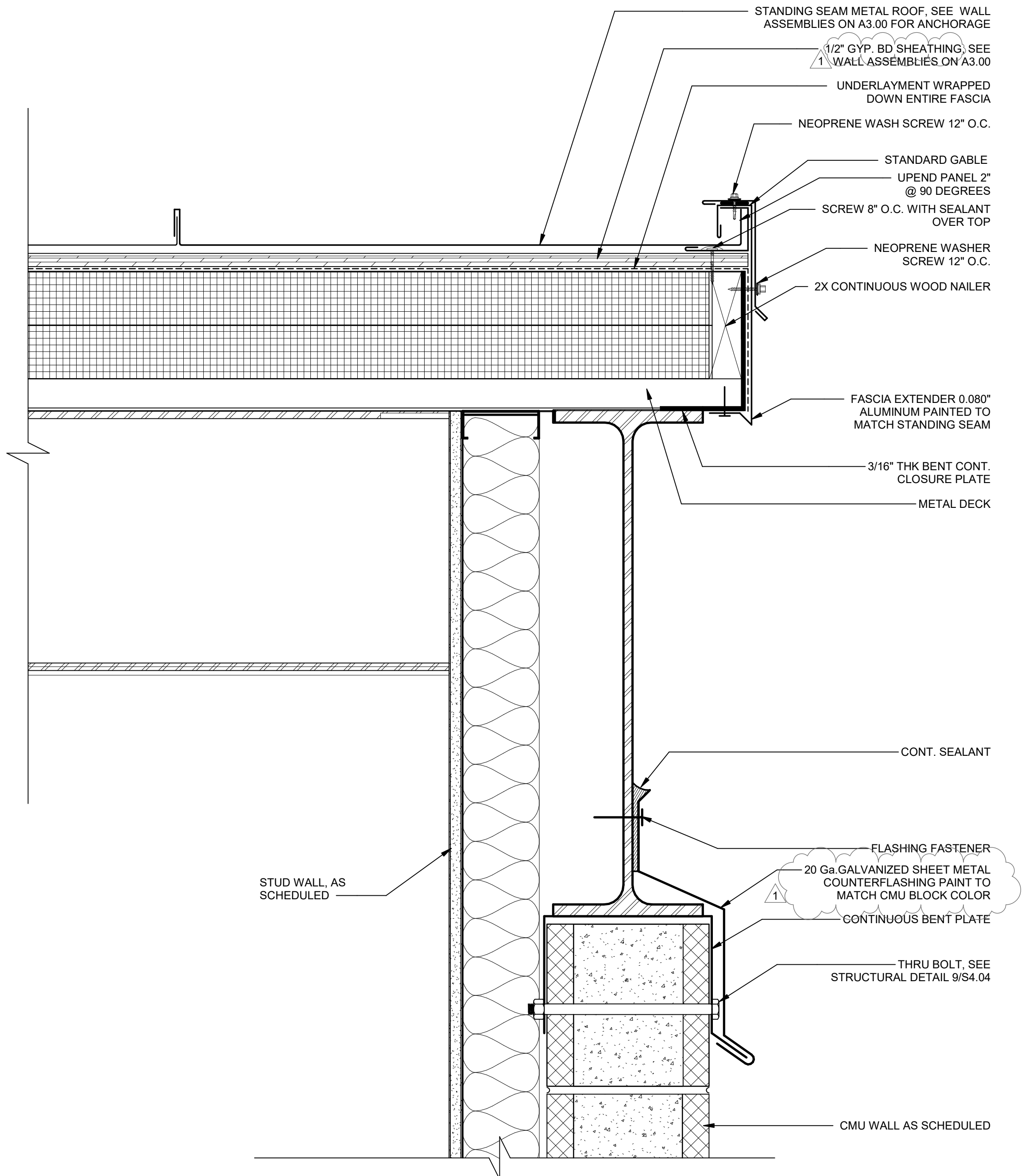
2 TYPICAL DETAIL @ TAPERED BEAM ROOF EDGE  
Scale: 3" = 1'-0"



4 TICKET BOOTH GUTTER DETAIL  
Scale: 1 1/2" = 1'-0"



3 TICKET BOOTH - ROOF AND SIGNAGE DETAIL  
Scale: 1 1/2" = 1'-0"



1 TYPICAL ROOF DETAIL  
Scale: 3" = 1'-0"

REVISIONS

1 ADDENDUM 1 02/01/2022

THIS APPROVAL IS FOR ITEMS WITHIN CLOUDED AREAS ONLY. FOR OTHER INFORMATION NOT CONTAINED WITHIN CLOUDED AREAS, REFER TO ORIGINAL DSA APPROVED PLANS.  
DO NOT USE THESE PLANS AS SUBSTITUTE FOR THE ORIGINAL DSA APPROVED PLANS.



NORWALK LA MIRADA UNIFIED SCHOOL DISTRICT  
**LA MIRADA HIGH SCHOOL NEW FOOTBALL STADIUM PROJECT**  
13520 ADELEA DRIVE, LA MIRADA, CA 90638

DSA # 03-120551

**NAC**  
ARCHITECTURE

NAC NO. 161-19015  
DATE 02/01/2022

ADDENDUM 1

ROOF DETAILS

**A9.02**